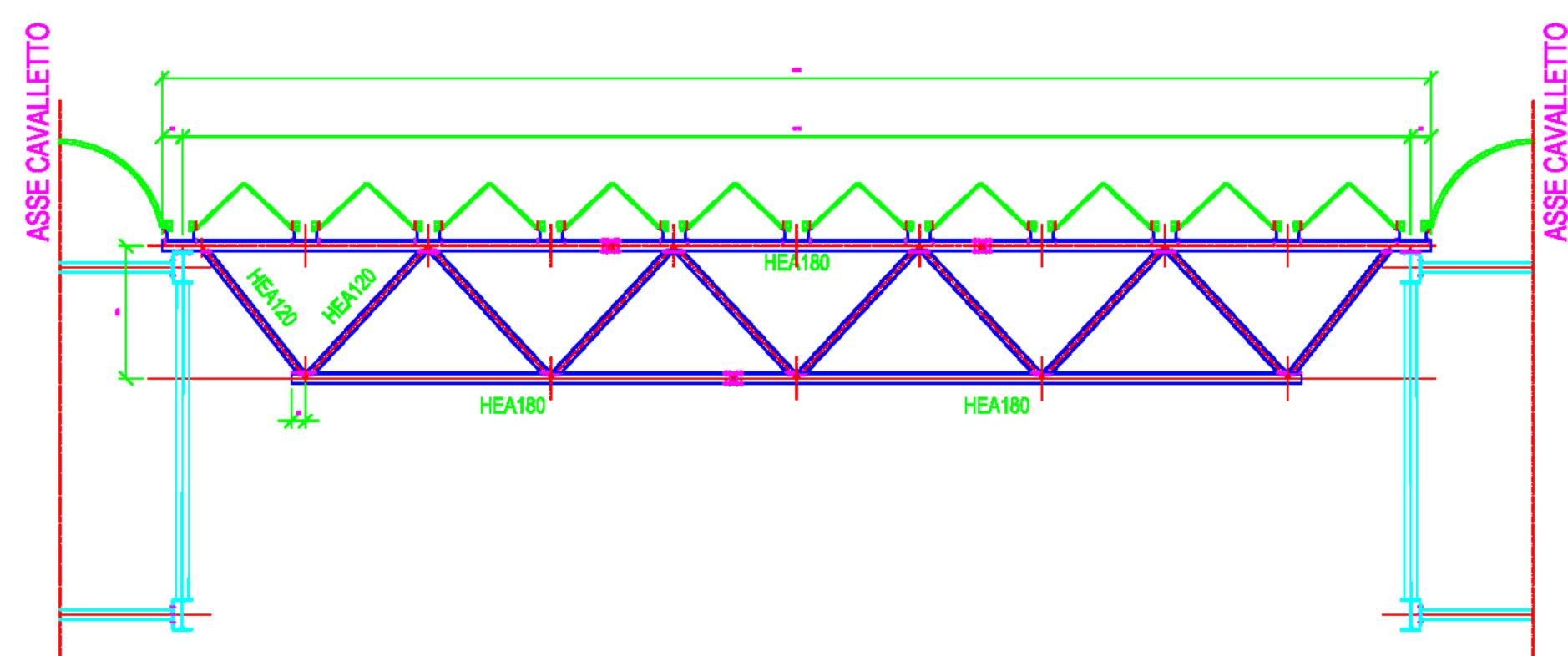
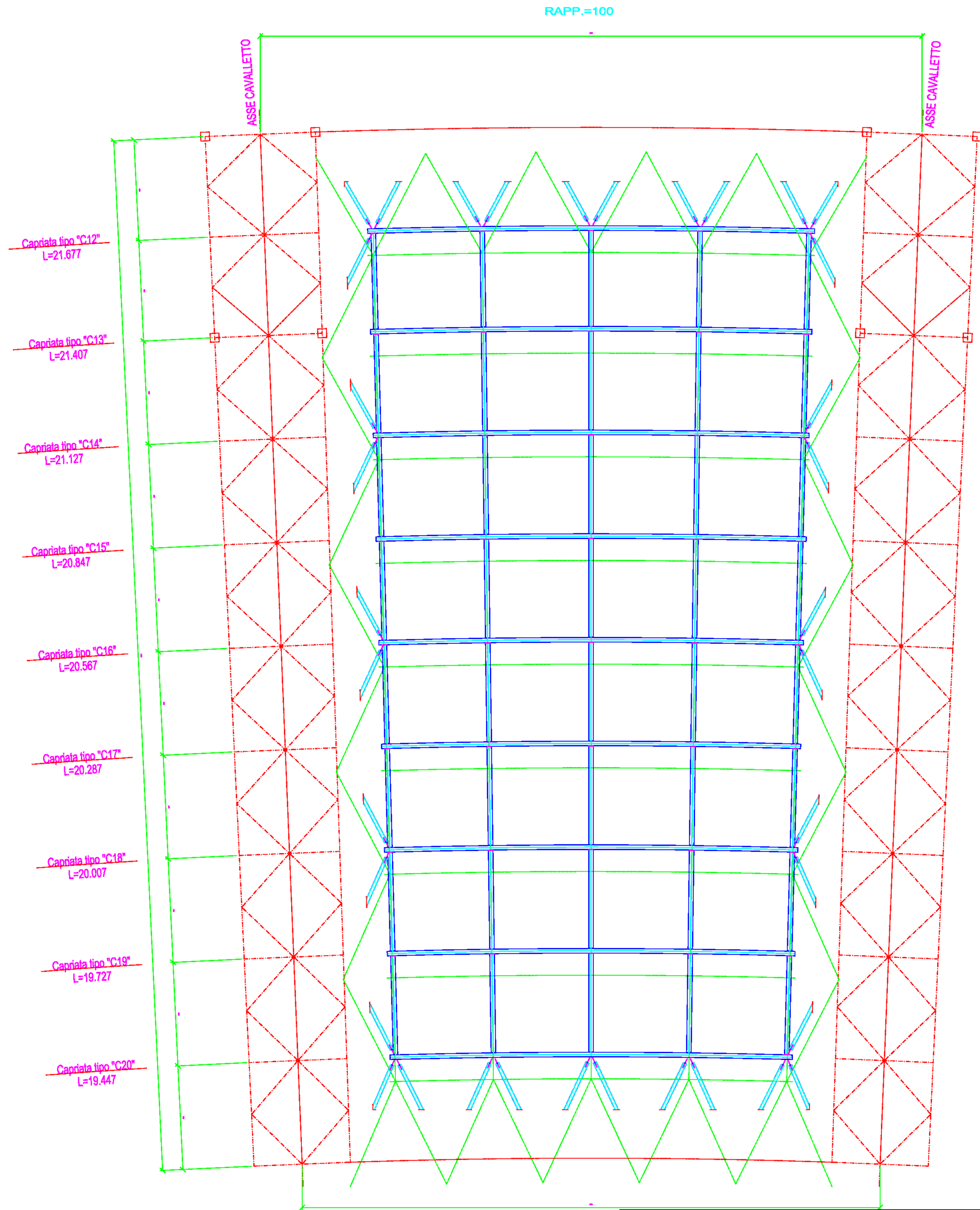
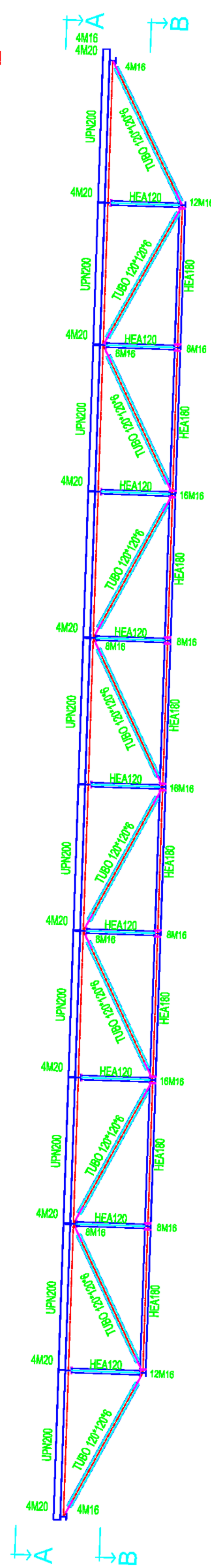
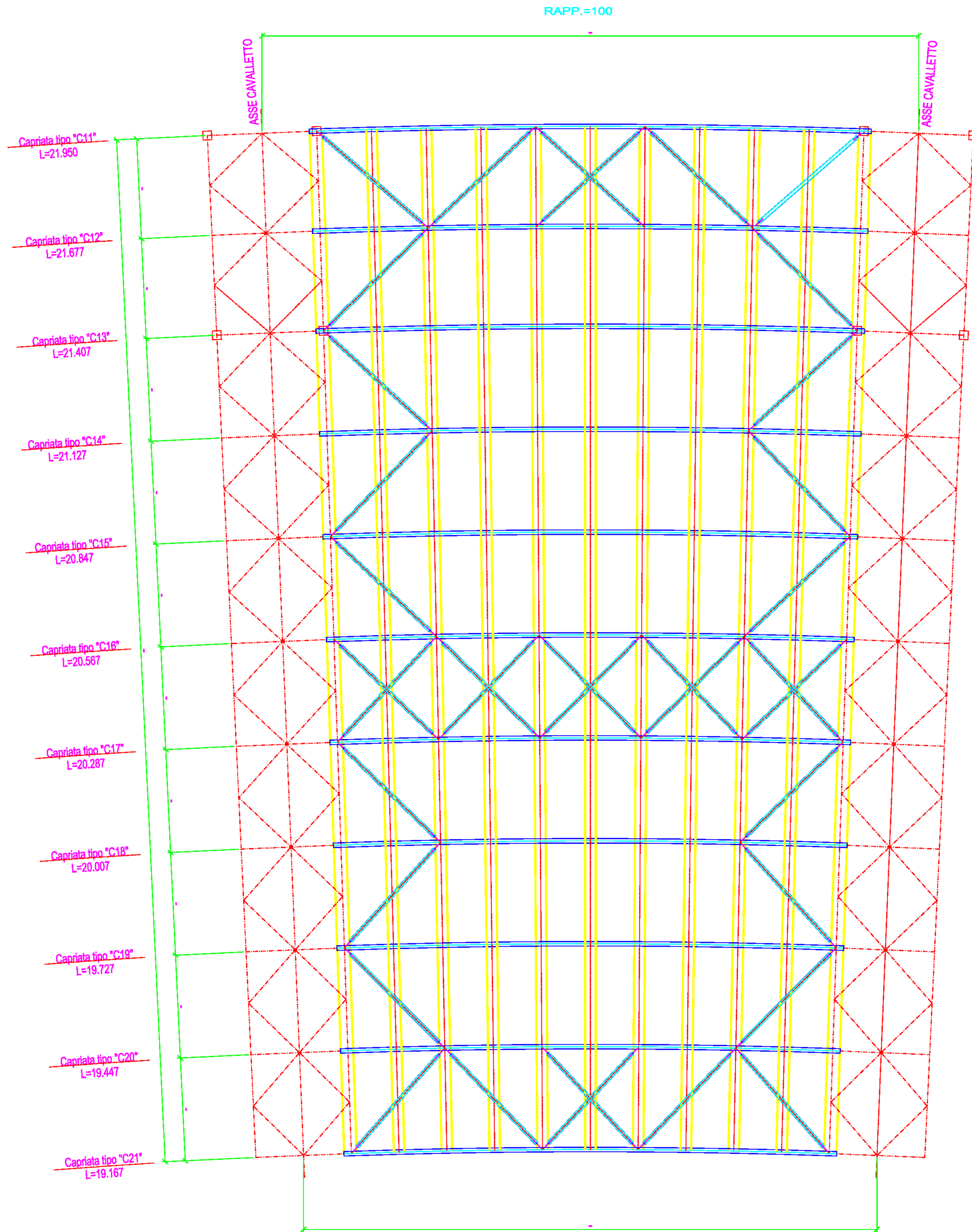



PIANTA SUPERIORE
Vista A-A

DECK TRIBUNA
(N° 6)

PIANTA INFERIORE
Sez. B-B

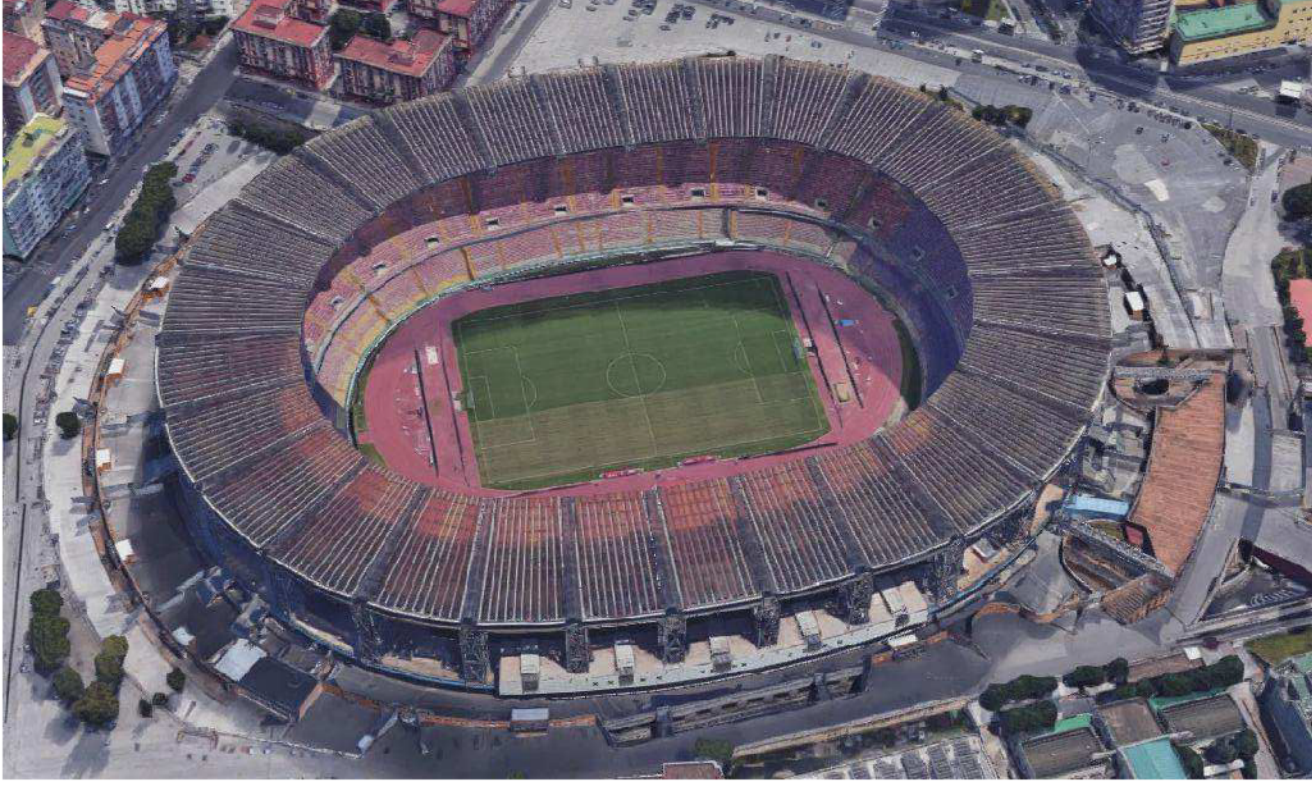




COMUNE DI NAPOLI

STADIO SAN PAOLO

Intervento di completamento della verifica delle opere in carpenteria metallica
Progetto esecutivo



Rup: Arch. Vincenzo Quaranta	Timbri:
Gruppo di progettazione Ing. Maurizio Attanasio Geom. Domenico Mennitti Istr. tecnico Aniello Manzo	

STRUTTURA DECK TRIBUNA

Scala: 1:100	Data: Dicembre 2018	Documento: TAV_09
Nome file: Tav_09_Struttura_Deck_Tribuna.dwg		