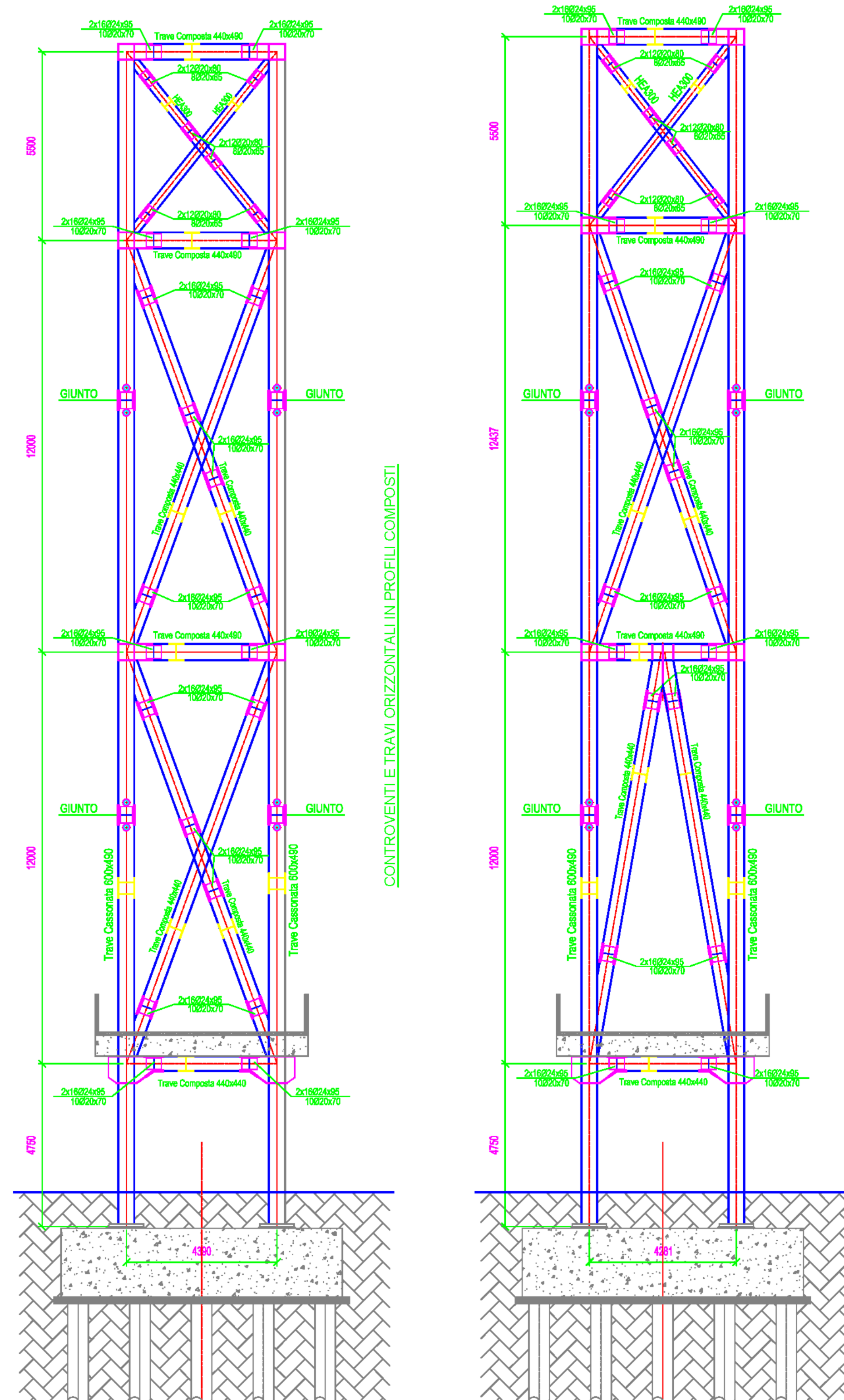


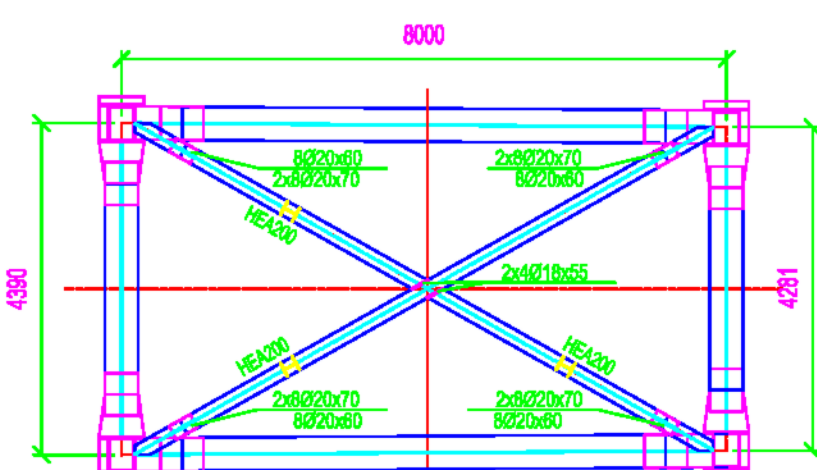
CAVALLETTO TRIBUNA



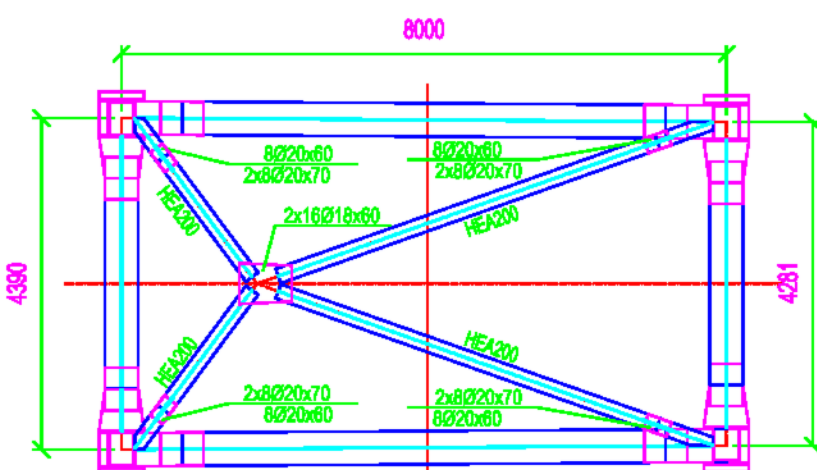
Sez. A-A

Sez. B-B

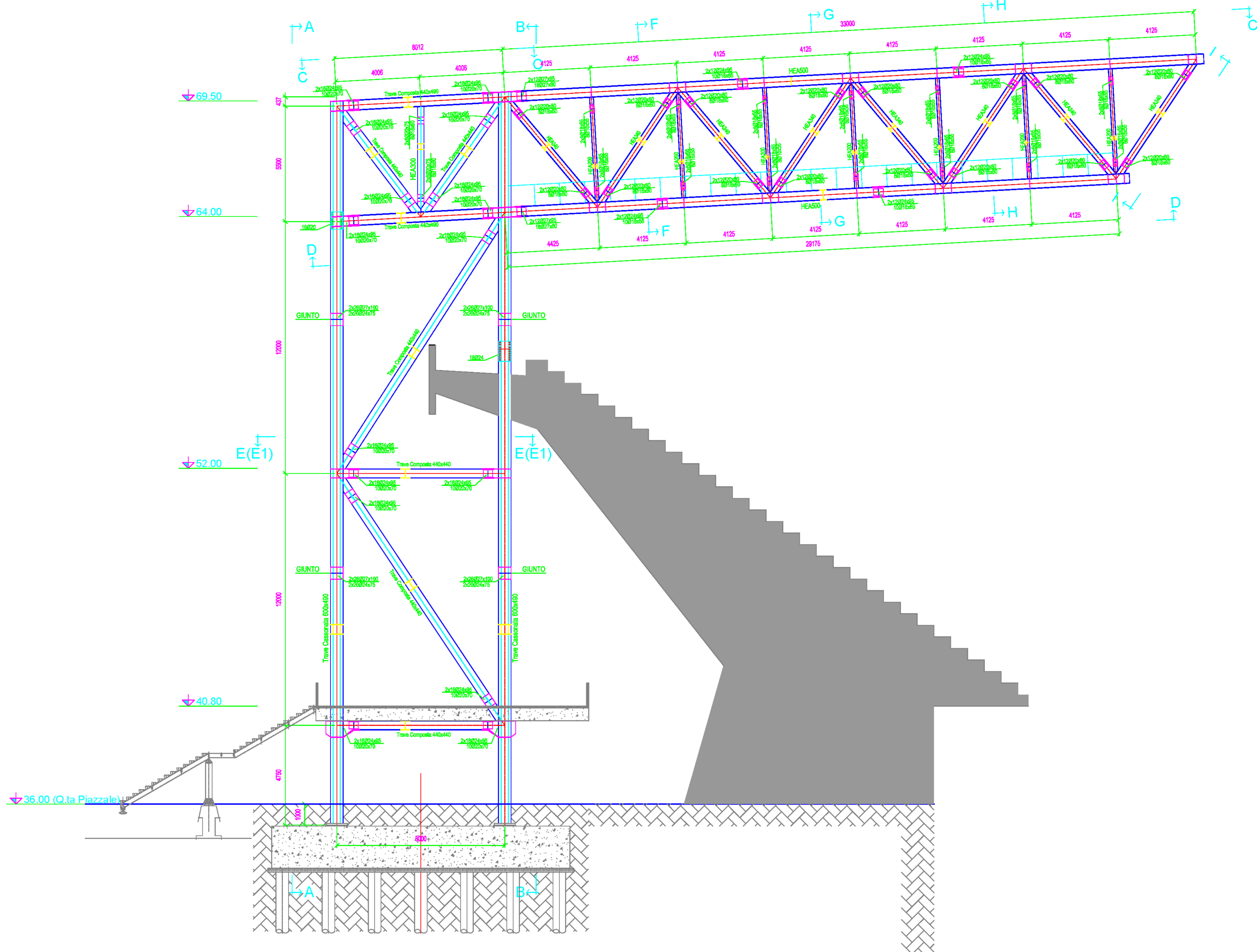
Sez. E-E



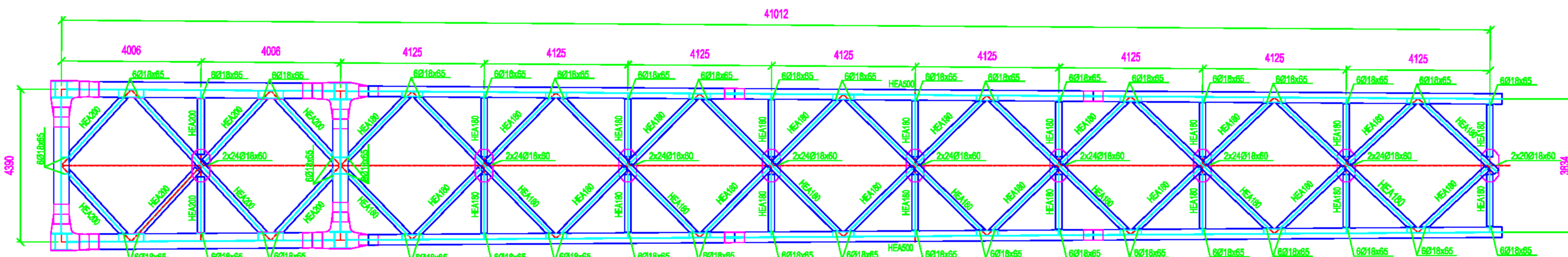
Sez. E1-E1



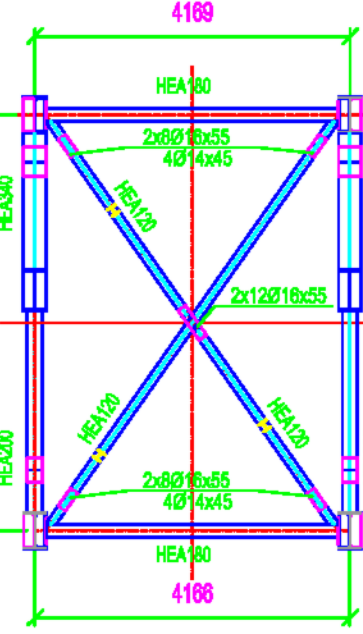
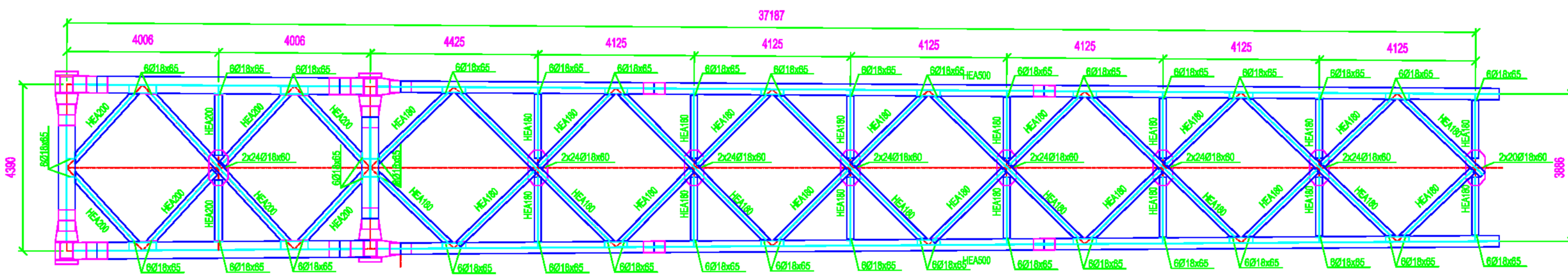
PER CAVALLETTI PICCHI. 49-55



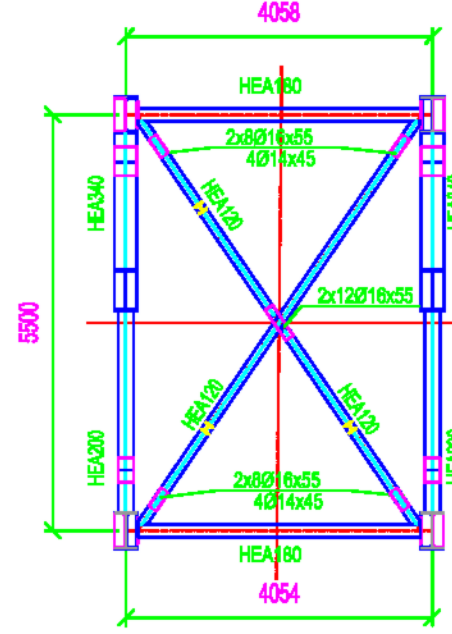
Vista C-C



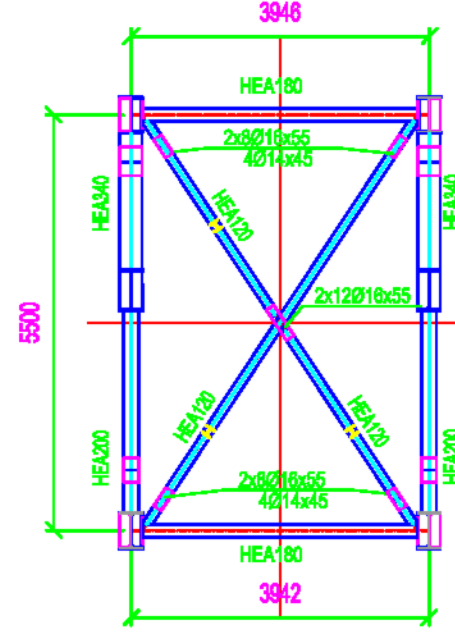
Vista D-D



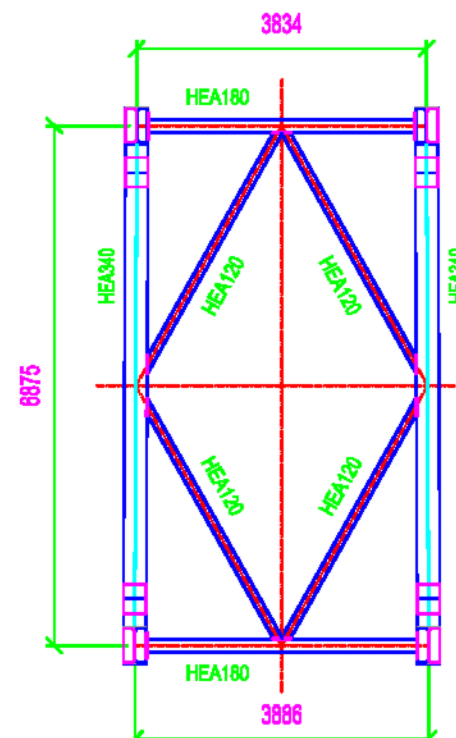
Sez. F-F



Sez. G-G



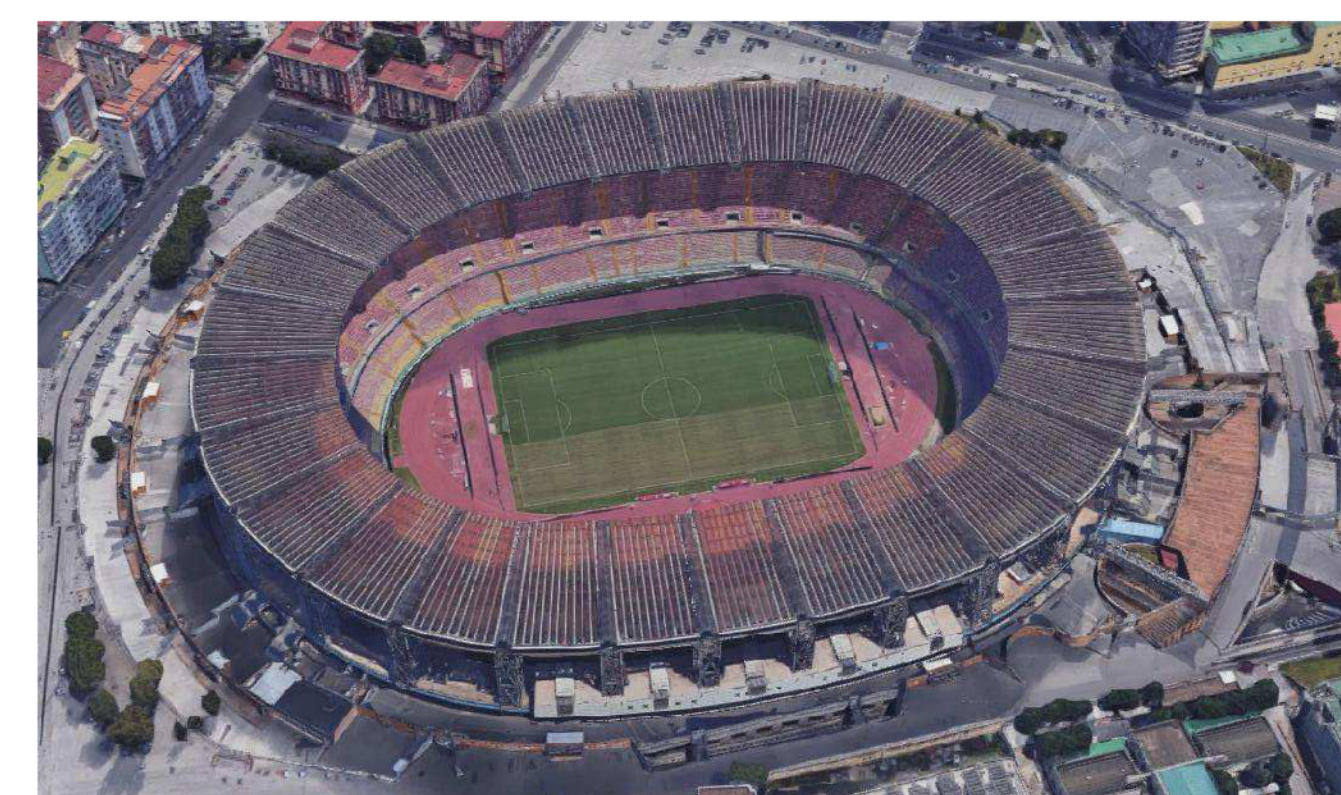
Sez. H-H



Sez. I-I



STADIO SAN PAOLO

Intervento di completamento della verifica delle opere in carpenteria metallica
Progetto esecutivoRup:
Arch. Vincenzo QuarantaGruppo di progettazione
Ing. Maurizio Attanasio
Geom. Domenico Menniti
Istr. tecnico Aniello Manzo

Timbri:

STRUTTURA CAVALLETTO TRIBUNA

Scale: 1:100

Data:

Dicembre 2018

Documento:

TAV_06

Nome file:
Tav_06_Struttura_cavalletto_tribuna.dwg